



PRATIK GROUP



PCGRERA070918000661
www.rera.cgstate.gov.in

Pratik Group presents Park Avenue, a residential project at a prime location of Raipur City. With a close proximity to all major landmarks of the city the project offers 1/2/3 BHK apartments at a very affordable price.





* Images used here are for illustration purposes only.



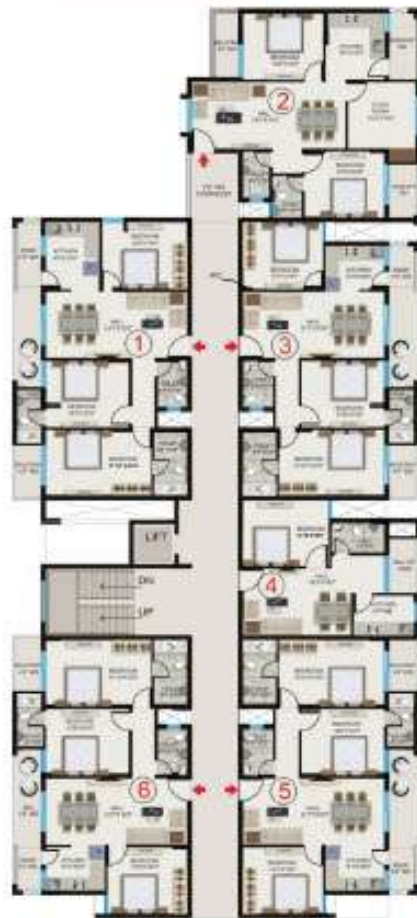
SPECIFICATIONS :

- Structure : RCC Frame
- Flooring : 2'x2' vitrified tiles
- Bathroom : 7' Height Vitrigled Tiles
- Kitchen : Granite Platform with branded kitchen sink 2' height dado
- Wall Finish : External putty with paint, internal putty with primer
- Electrification : ISI Certified high quality wiring & switches
- Plumbing : High quality plumbing fitting
- Sanitary : Branded Bath fitting & sanitary ware
- Doors : All doors are flush door
- Windows : White coated aluminum 3 track windows

A-Block Floor Plan



B-Block Floor Plan



Block-A 3BHK Type



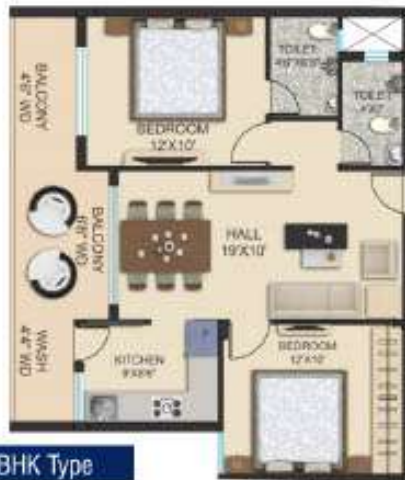
Block-B 3BHK Type



Block-B 1BHK Type



Block-C 2BHK Type



कैम्पस के प्रमुख सुविधाएं



भव्य प्रवेश द्वार



सुन्दर व आकर्षक एलिवेशन



24x7 सुरक्षा व्यवस्था



24x7 पॉवर बैकअप कॉमन एरिया में



उच्चस्तरीय फायर फाइटिंग सिस्टम



रेनवाटर सर्वोस्टिंग सिस्टम



स्वच्छता हेतु भूमिगत नालियां



बेहतरीन हरियाली सहित शांत वातावरण

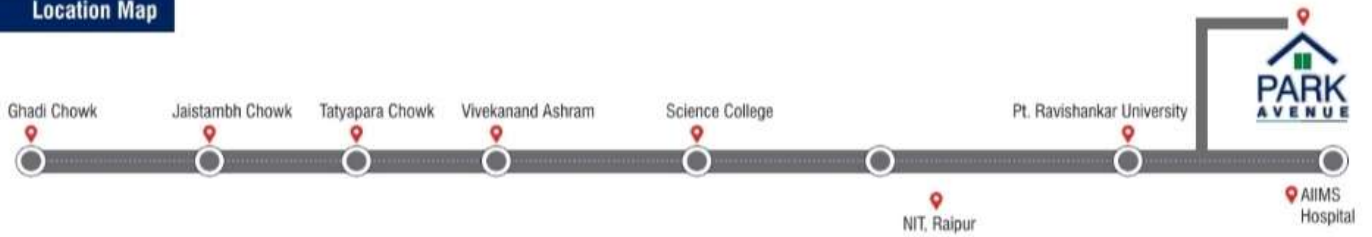


बच्चों के मनोरंजन हेतु बाल उद्यान



यूटिलिटी शॉप एवं कमांशियल एरिया

Location Map



Site Address : Near Pt. Ravishankar Shukla University, G.E. Road, Amanaka, Raipur (C.G.)

Landmark Distance

- 📍 AIIMS - 3 Mins.
- 📍 Bhitai - 30 Mins.
- 📍 Railway Station - 8 Mins.
- 📍 Pandri Bus Stand - 12 Mins.
- 📍 Magneto Mall - 15 Mins.
- 📍 Police Station - 2 Mins.
- 📍 NIT College - 2 Mins.
- 📍 International Cricket Stadium - 30 Mins.
- 📍 Ring Road 1 - 2 Mins.
- 📍 Ring Road 2 - 5 Mins.

* Building elevations used are as actuals.

Head Office :
81 Jairam Complex, Sharda Chowk, Raipur (C.G.)
✉️ pratikbuildconcg@gmail.com
🌐 www.pratikbuildcon.com



Marketing by:



Contact :